



Easy Chess Puzzle # 0115

By

G Bud Games
<https://gbud.in>

January 24, 2022

Contents

Easy Chess puzzle # 0115 - Mate in 1 move	3
Easy chess puzzle 0115	3
Solution to easy chess puzzle 0115	4
Solution 1	4
Right moves for the solution to the easy chess puzzle 0115	5
Explanation for the moves	5
Categories of easy chess puzzle 0115	5
easy chess puzzle 0115 chart	6
How to view the solution to easy chess puzzle 0115	8
How to get help for moves in the easy chess puzzle 0115	9
Play chess for free	10

List of Figures

1	Solve this easy chess puzzle 0115. Mate in 1 move @ https://gbud.in/gfhl2f1	3	
2	Solve this chess puzzle online with solution @ https://gbud.in/gfhl2f1	3	3
3	Initial board position of easy chess puzzle 0115	4	
4	Ba4#	5	
5	easy chess puzzle 115 chart 1	6	
6	easy chess puzzle 115 chart 2	7	
7	easy chess puzzle 115 chart 3	7	
8	easy chess puzzle 115 chart 4	8	
9	Click the solution button to view solutions @ https://gbud.in/gfhl2f1	8	
10	Click the help button to get help on next move @ https://gbud.in/gfhl2f1	9	
11	Solve more easy puzzles @ https://gbud.in/chsezpz	9	
12	Solve other puzzles @ https://gbud.in/chsgppz	9	
13	Play chess online for free. Solve puzzles and play with friends	10	
14	Solve this puzzle online by scanning this QR code or go to the link below	11	

Easy Chess puzzle # 0115 - Mate in 1 move

Solve this easy chess puzzle and improve your chess games through improvement of your chess strategies and chess tactics.

Puzzle No : 0115

Difficulty level : Easy

Description : Mate in 1 move

Next Move : White

Player level : Beginner

Short URL for puzzle : <https://gbud.in/gfhl2f1>

Easy chess puzzle 0115

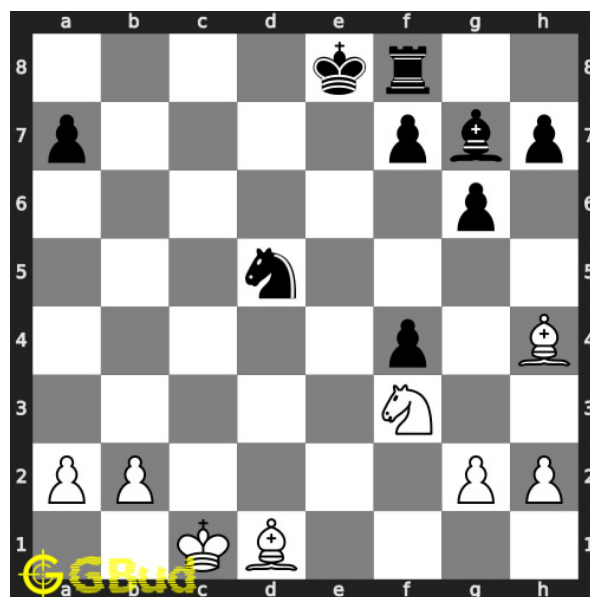


Figure 1: Solve this easy chess puzzle 0115. Mate in 1 move @ <https://gbud.in/gfhl2f1>



Figure 2: Solve this chess puzzle online with solution @ <https://gbud.in/gfhl2f1>

Dont forget to check out [chess puzzles](#), [easy chess puzzles](#), [medium chess puzzles](#), [hard chess puzzles](#) and [chess puzzles collections](#) .

Solution to easy chess puzzle 0115

At this puzzle, next **move** is by **White**. The objective of the puzzle is to mate in 1 move.

See the interactive solution at the [puzzle page](#)

Solution 1

Initial board position This is the initial board position of easy chess puzzle 0115.

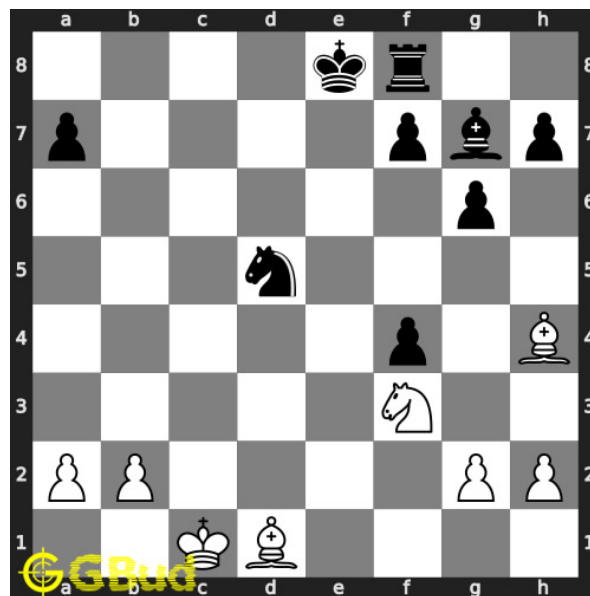


Figure 3: Initial board position of easy chess puzzle 0115

Move 1 Move by white

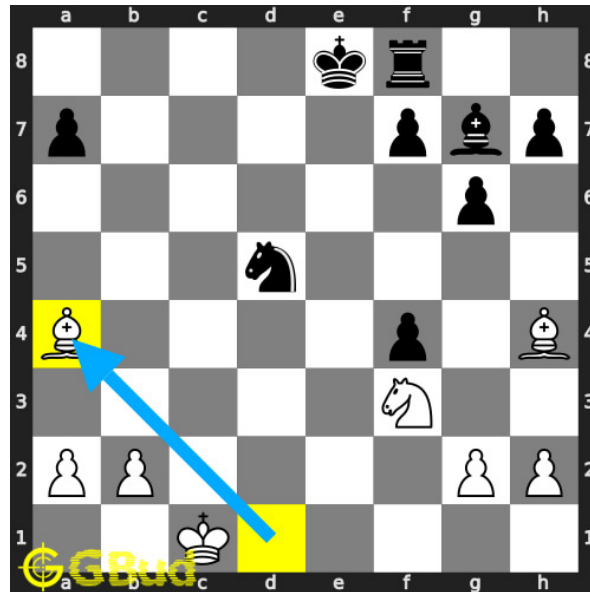


Figure 4: Ba4#

your **bishop** moves to **a4** and **checkmate**. opponent's **king** is blocked by friendly **pieces**. this is called **boden's mate**. this is how you can **mate** in 1 **move**.

Right moves for the solution to the easy chess puzzle 0115

Based on the objective of the puzzle, you have to make the right moves. Following are the right moves

1. Ba4#

Explanation for the moves

1. Ba4# - Your bishop moves to a4 and checkmate. Opponent's king is blocked by friendly pieces. This is called Boden's mate. This is how you can mate in 1 move.
2. For right move - You know how to move a bishop to have a boden's mate. You have a good understanding of the game
3. For wrong move - You could have had a boden's mate by moving the bishop. Try again

Categories of easy chess puzzle 0115

This easy chess puzzle falls in these categories.

1. [Easy chess puzzles](#)
2. [Mate in 1 puzzles in chess](#)
3. [Endgame puzzles in chess](#)
4. [Mate pattern puzzles in chess](#)
5. [Bishop puzzles in chess](#)

easy chess puzzle 0115 chart



Figure 5: easy chess puzzle 115 chart 1



Figure 6: easy chess puzzle 115 chart 2



Figure 7: easy chess puzzle 115 chart 3

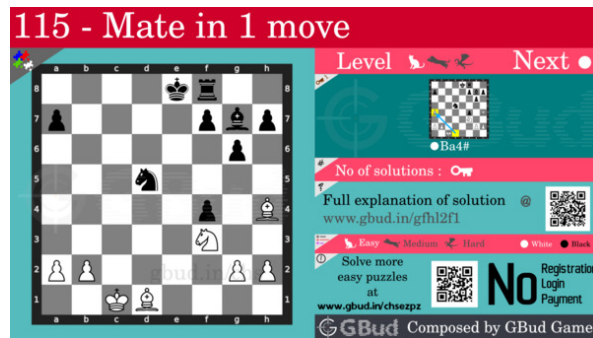


Figure 8: easy chess puzzle 115 chart 4

How to view the solution to easy chess puzzle 0115

To view the [solution to this puzzle](https://gbud.in/blog/game/chess/easy-chess-puzzles/easy-chess-puzzle-0115.html), follow the steps given below

1. Go to the [puzzle page](https://gbud.in/blog/game/chess/easy-chess-puzzles/easy-chess-puzzle-0115.html)
2. Click the solution button (Key as shown [below](https://gbud.in/blog/game/chess/easy-chess-puzzles/easy-chess-puzzle-0115.html)) to view the solution



Figure 9: Click the solution button to view solutions @ <https://gbud.in/gfhl2f1>

How to get help for moves in the easy chess puzzle 0115

To get help or the possible next moves in the puzzle, , follow the steps given below

1. Go to the [puzzle page](#)
2. Click the help button (exclamation mark as shown [below](#)) to get help or suggestion on next possible [move](#)



Figure 10: Click the help button to get help on next move @ <https://gbud.in/gfhl2f1>



Figure 11: Solve more easy puzzles @ <https://gbud.in/chsezpz>



Figure 12: Solve other puzzles @ <https://gbud.in/chsgppz>

Play chess for free

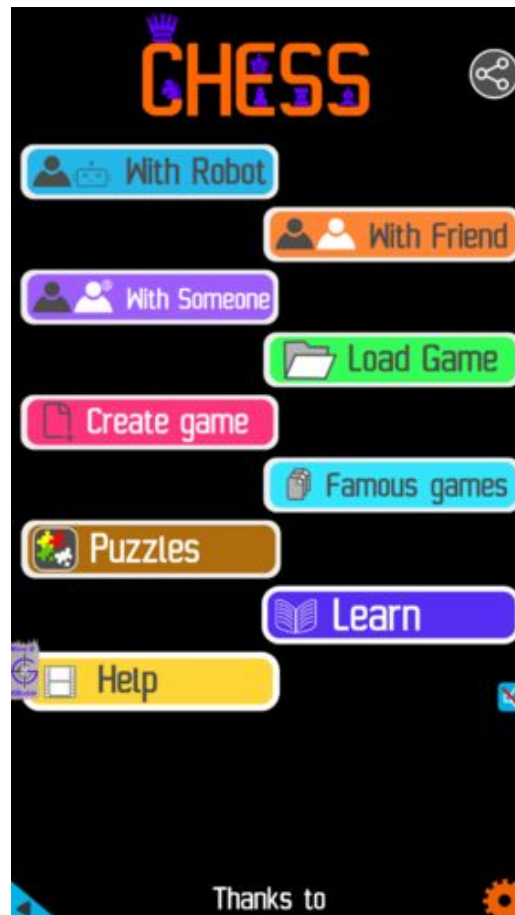


Figure 13: Play chess online for free. Solve puzzles and play with friends

Play chess for free at <https://gbud.in/chs>

We present you a platform to play chess online with friends for free. No need to install any app. You can play chess for free without registration or login.

Simple. You can do several chess related activities.

1. [solve chess puzzles](#)
2. [learn about chess](#)
3. [play chess with computer](#)
4. [play chess with friend](#)
5. [create your own chess games](#)

6. [fen viewer](#)
7. [fen editor](#)
8. [fen generator](#)
9. [pgn viewer](#)
10. [chess board editor](#)
11. [view famous chess games.](#)



Figure 14: Solve this puzzle online by scanning this QR code or go to the link below

<https://gbud.in/gfhl2f1>

Read the latest article on Easy Chess puzzle # 0115 - Mate in 1 move by scanning this QR code or click the link

Previous article : « [Easy Chess puzzle # 0114 - Mate in 1 move](#)

Next article : [Easy chess puzzles](#) »

[Back to top](#)

[Contact Us](#)